

FONUX EMERGENCY LIGHT - NARROW LENS

Brand: **Fonux** | Category: **Emergency Light**

Product Datasheet	Website Know More PDF
Recommended Website Card Name	FONUX EMERGENCY LIGHT - NARROW LENS
Source Datasheet	Emergency BK6 Data sheet.pdf



Specification Sheet For Emergency light
BK6 Series



IP65

Al Qusais Industrial area-4, Dubai, United Arab Emirates | Tel# 042630306-042625333, ray@ndbopairs.ae
www.alrayandkb.com

Key Details

- Emergency luminaire option
- Long-life LED emergency lighting
- Maintained / non-maintained operation

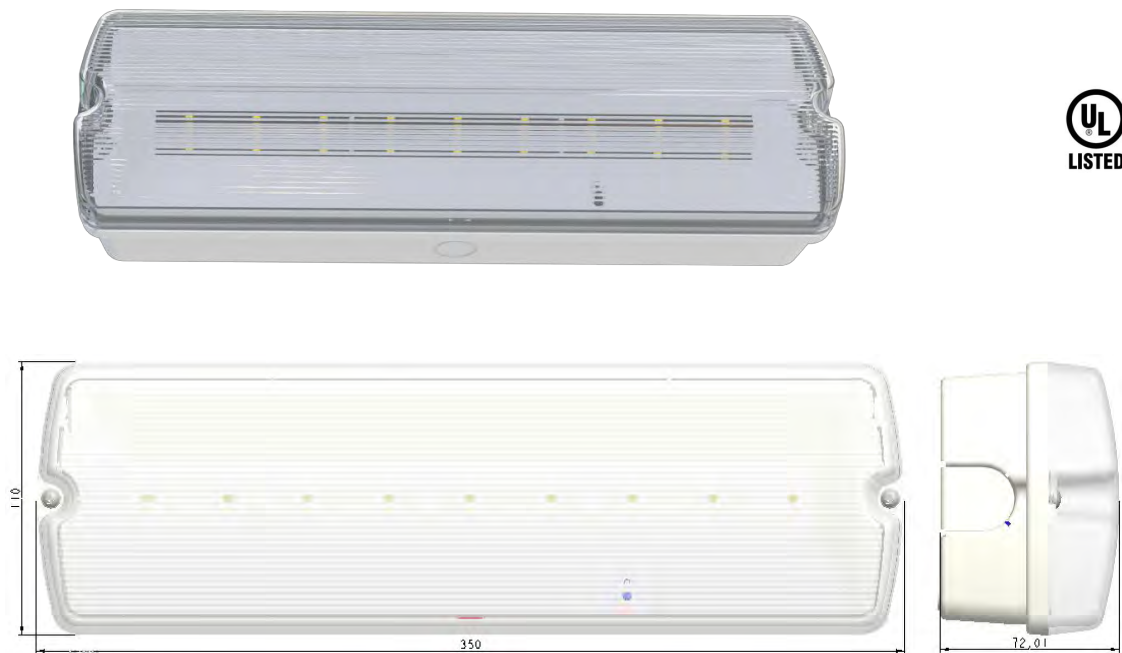
Original manufacturer / supplier datasheet pages are included after this cover page for technical reference.



Specification Sheet For Emergency light BK6 Series



IP65



Bulkhead Emergency light
Model: BK6- ACEM-Z
common emergency light

STANDARD FEATURES

HOUSING

- Size: 350x110x72.01mm
- PC housing.
- IP 65.
- Suitable for damp location.
- .Suitable for use in 5~45°C ambient temperature
- IK 08 protection rating.
- Rohs compliant

MOUNTING

- Wall, Ceiling mounting, Recessed need the accessory clip

ELECTRICAL FEATURES

ELECTRICAL

- 220~240V 50Hz operation.
- LED indicator light and push button test switch.
- **Non-maintained and Maintain is switchable to option**

LAMPS

- 2 Watts max, 9pcs SMD LED
- Full charge at Emergency mode: Lumen output: more than 180 LM
- LED color temperature: 6000K-7000K



BATTERY

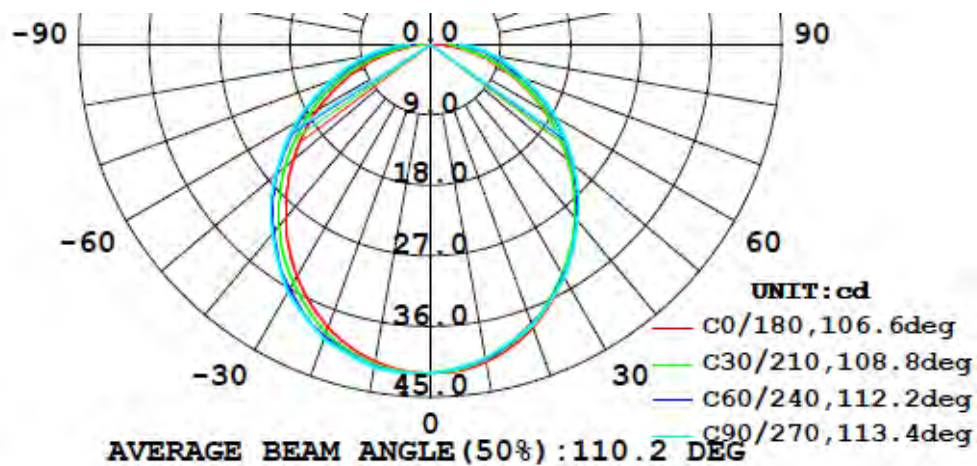
- 3.2V 1500mAh **LFP18650 (LiPO4) Battery** with 5 years life time.
- Discharging time: 3 hours
- Full charging time: 24 hours
- Over-charge and over-discharge protection

CERTIFICATION: UL Certificate

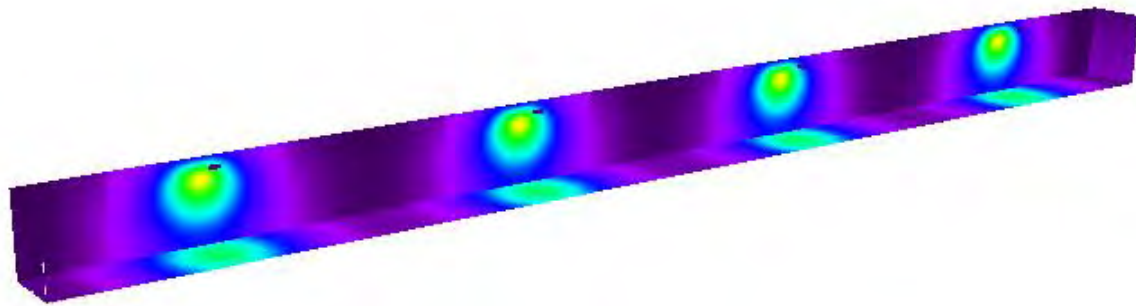
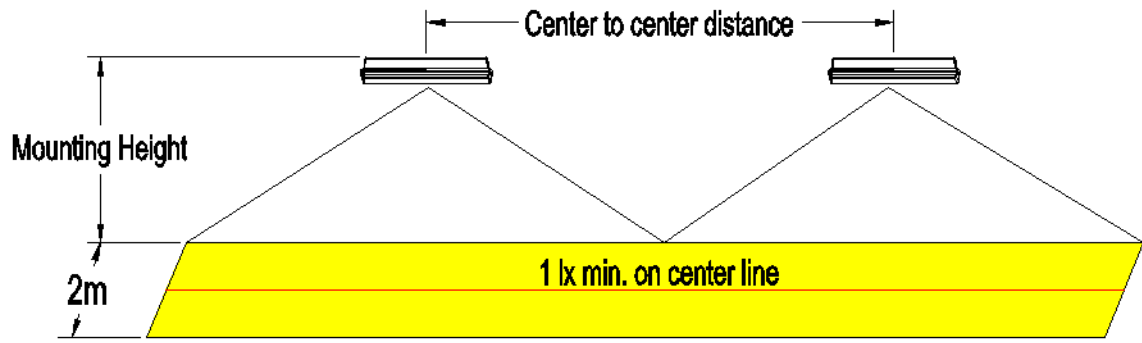


Photometric for EU standard (EN1838)

Corridor lens (default assemble)



Luminaire mounting space (EU version model)



Position of surface in room:
Marked point: (10.500 m, 0.950 m, 0.000 m)



Grid: 128 x 32 Points

E_{av} [lx]
2.72

E_{min} [lx]
1.03

E_{max} [lx]
6.24

u_0
0.380

Mounting Height	Center to center distance
2.5m	10.5m
3.0m	11m
3.5m	11m

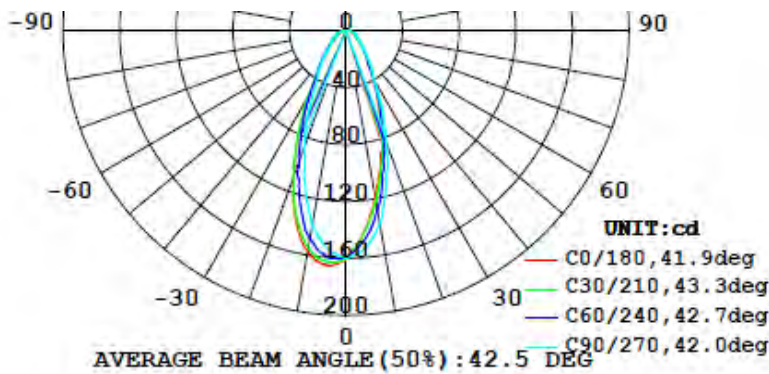
Compliant EUROPE standard EN1838

Illuminance requirement:

Escape route up to 2 m wide, 1 lx on the central axis and 0.5 lx at 50% of the width.

Photometric for US standard (UL924)

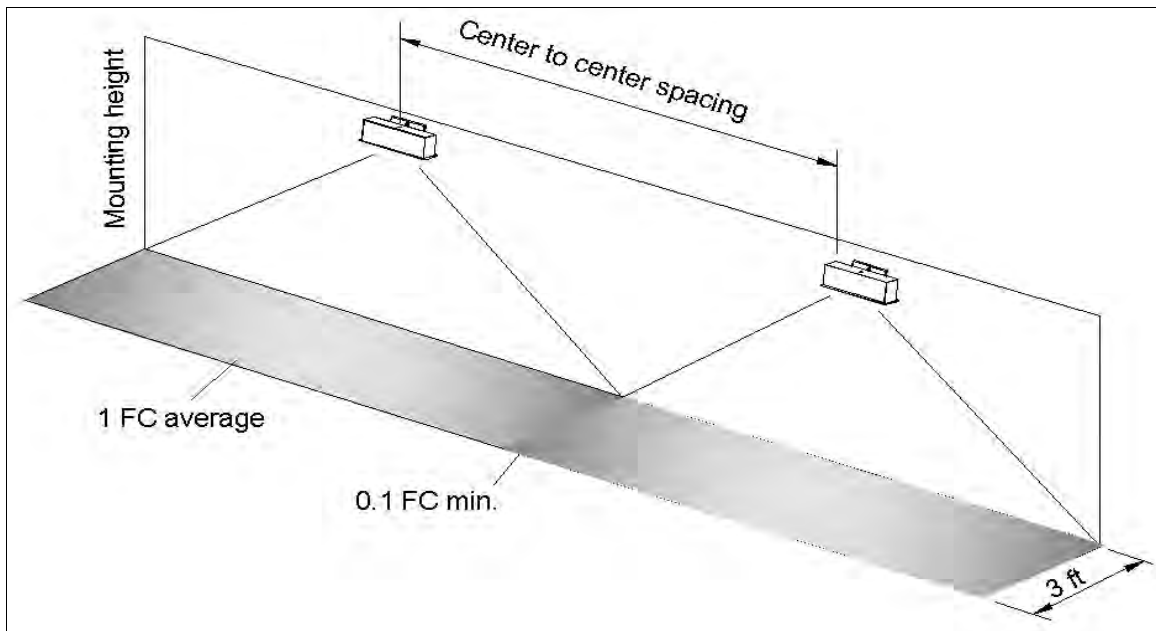
Luminous intensity distribution



Center to Center Spacing

NFPA 101 requires 1.0 foot-candle average and 0.1 foot-candle minimum with a 40:1 maximum/minimum ratio. The corridor used is 100 feet long, 9 feet ceiling with a 6 feet wide walkway and 3 feet path of egress.

The reflectance are 80% ceiling, 50% walls and 20% floors. The fixture mounting height is 7.5 feet.



No.	Spacing @ 7.5 feet mounting height	Spacing @ 10 feet mounting height
1	15 feet	12feet