

FONUXX FXL-180A WATERPROOF EMERGENCY LIGHT

Brand: Fonux | Category: Emergency Light

Product Datasheet	Website Know More PDF
Recommended Website Card Name	FONUXX FXL-180A WATERPROOF EMERGENCY LIGHT
Source Datasheet	high intensity emergency FXL 180A.pdf

SPECIFICATION SHEET FOR WATERPROOF
EMERGENCY LIGHTING
SUITABLE FOR WET LOCATION
SERIES Model :FXL - 180A



Key Details

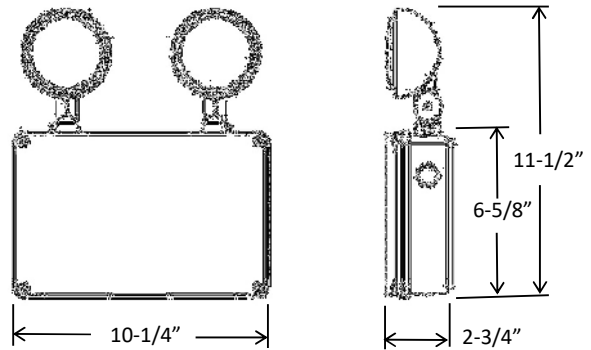
- Waterproof emergency lighting
- Suitable for wet location
- Emergency backup lighting solution

Original manufacturer / supplier datasheet pages are included after this cover page for technical reference.

**SPECIFICATION SHEET FOR WATERPROOF
EMERGENCY LIGHTING
SUITABLE FOR WET LOCATION
SERIES Model :FXL - 180A**



Product Photo And Dimension



Product Feature

Housing

- Polycarbonate material and waterproof design suitable for wet location.
- Plastic enclosure with flame retardant.
- Fully rotational lamp heads design.

Mounting

- Suitable for wall mount
- Universal J-Box mounting pattern on back plate.

Electrical

- 220~240V 50/60Hz dual voltage input optional.
- Brownout circuit.
- Battery low voltage protection.
- Solid-State transfer circuit.
- Test switch and battery charging indicator.
- Maintenance free LiFePO4 battery.
- 24hours recharge, more than 1.5Hrs/3Hrs discharge.

Battery

- High temperature type LiFePO4 battery.
- Battery have to recharge if product keep in stock 9 months.
Detail manual refer "BATTERY STOCK AND RECHARGE GUIDELINE".

Options

- Self-testing and self-diagnostics optional.
- Remote capability 6V3W optional.
(for constant output remote head, remote capability 1.5W max.)
- Cold location version optional.

Illumination

- 1000lm output.
- Lamp head: SMD2385 0.5W led
output rating:3.8W*2pcs

Code compliance

- UL listed and meets or exceed all requirement in NFPA 70, NFPA 101 life safety code, suitable for U.S.A
- Suitable for 0°C to 50°C ambient temperature, Suitable for wet location.
- CL option with heater pad Ta range -25 °C to 50 °C, suitable for wet and cold location.
- Compliant CEC title 20 efficiency regulations.

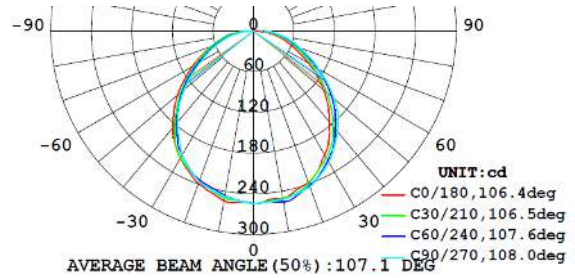
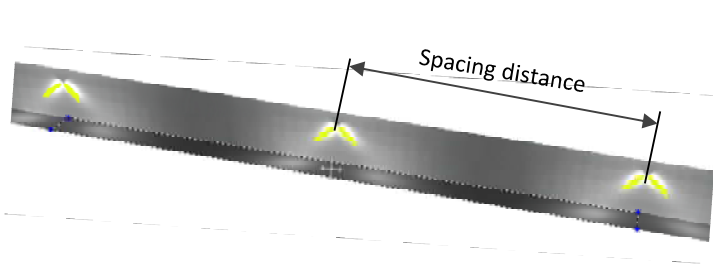
Order Guide

Family	Option		Housing color
Waterproof EM	Discharge time (option): ---90mins or ---180mins Recharge time: 24hours Illumination: 1000lm output Lamp head Output rating: 3.8W led *2pcs	- RC: Remote capability option - Blank: Manual test, no remote capability - CT: Self-testing /self-diagnostics - CL: Cold weather option	- WH: White - BK: Black

Mounting Spacing Distance

NFPA 101 requires 1.0 foot-candle average and 0.1 foot-candle minimum with a 40:1 maximum/minimum ratio. The corridor used is 250 feet long, 10 feet ceiling with a 6 feet wide walkway and 6 feet path of egress for calculation. The reflectance are 70% ceiling, 50% walls and 20% floors. The fixture mounting height is 7.5 feet /10ft.

	7.5ft height	10ft height
	6ft width path	6ft width path
1000lm	63ft	58ft



Remote Head

WMU-RC can drive this remote head optional



- WEXH-800L-0.75W*2pcs**
- Single remote heads, DC3-12V input, 0.75W constant power, delivers 75lm.
 - Operation temperature range -25°C...+50°C suitable for wet location.
 - UL, cUL listed.



- WEXH-910L-1.5W*1pc**
- Dual remote heads, DC3-12V input, 1.5W constant power, delivers 150lm,
 - Operation temperature range -25°C...+50°C suitable for wet location.
 - UL, cUL listed.



- WEXH-900L-1W*1pc**
- Single remote heads, DC3-12V input, 1W constant power, delivers 100lm.
 - Operation temperature range -25°C...+50°C suitable for wet location.
 - UL, cUL listed.

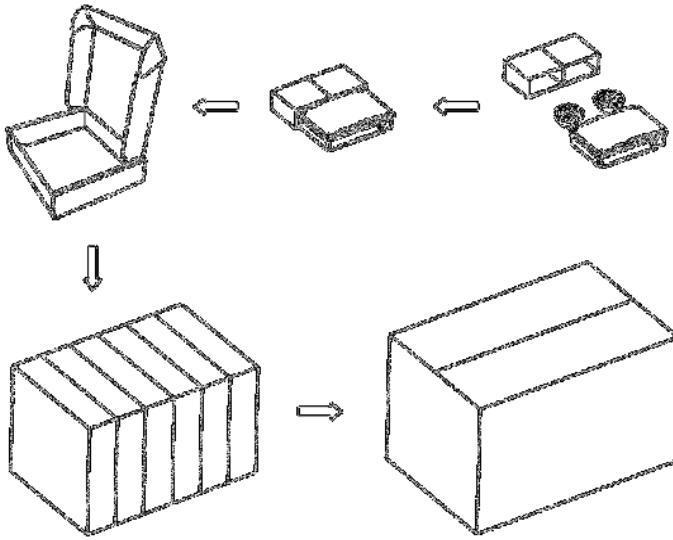


- NRM-S*2pcs**
- single remote head, 6V 1.5W.
 - Delivers 130lm per unit, operation temperature range 0°C...+50°C.
 - Suitable for damp location.
 - UL, CUL listed.



- NRM-D*1pc**
- dual remote heads, 6V 3W
 - Delivers 260lm per unit, operation temperature range 0°C...+50°C.
 - Suitable for damp location.
 - UL, CUL listed.

Package



Q'TY: 6 PCS
N.W: 7.4 KGS
G.W: 9.5 KGS
MEA'S: 1.53 CUFT