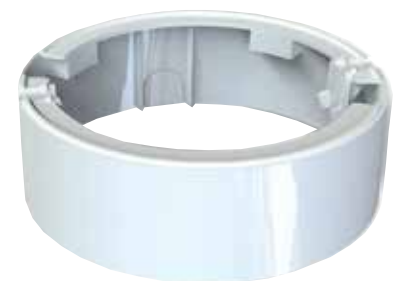


## NEMD EMERGENCY LIGHT (NARROW LENS)



### Technical Specification:

* Input Voltage	:	220 ~ 240 VAC 50/60Hz
* Power consumption	:	Max. 8W
* Charge time	:	24 Hrs
* Discharge duration	:	3 Hours
* Battery	:	High temp. Ni-MH battery, lifetime 4 years
* Test facility	:	AUTO test and DALI
* Operation	:	NEMD1: non-maintained, can change to switchable maintained NEMD2: non-maintained only
* Mounting	:	Recessed and Ceiling surface mounting
* LED	:	SMD 3030 1W, CCT 6500K
* Deliver Lumen	:	NEMD1: 235lm, NEMD2: 335lm, constant lumen output
* Lens option	:	Wide lens for open area, narrow lens for corridor
* Cut out hole	:	Dia 120mm
* AC supply cable	:	H03VV-F 0.75 x 2C (3C), suitable AC supply 1 in and 1 out
* Degree protection	:	IP20
* Insulation class	:	Class II
* Housing material	:	ABS
* Ambient temperature	:	0°C... +40°C



Accessories: