

RE-102/104

Conventional Fire alarm control panel



OVERVIEW

RE - 108 is a right blend of affordability design, user friendly, latest technology and quality for fire alarm panels. RE-108 micro processor based conventional Fire Alarm Control panel are designed to be used for small size commercial buildings and small scale industries. The RE-108 model is a 8 zone standalone panel with optional zone wise Sounder / contact.



FEATURES

- ▶ As per IS-15908: 2011 standard
- ▶ Standby battery back-up with built-in charging
- ▶ Fire / Fault status in unambiguous colored LED indication
- ▶ Switch mode power supply
- ▶ Tactile keypad for easy panel operation
- ▶ System on indication
- ▶ Main, Standby status indication
- ▶ Low battery visual warning with audible tone
- ▶ Relay output for actuators for Fire and Fault
- ▶ Lamp Test Facility
- ▶ Zone wise one man walk test facility
- ▶ Zone wise isolation facility with loop voltage cut off
- ▶ Compatible to all type of Conventional Detectors
- ▶ Optional zone wise sounder / Zone wise control
- ▶ Switch mode power supply
- ▶ Modular construction, serviceable
- ▶ Surface mount technology
- ▶ Battery polarity & deep discharge protection
- ▶ 16 x 2 Dot Matrix LCD Display

ELECTRICAL SPECIFICATION

Primary power	: 120 / 220VAC, 50Hz
Standby power	: 24V D.C (2 nos of 12V, 7Ah Sealed Lead Acid Battery)
Quiscent current	: 55mA
Operating Temperature	: 0-49° C/32 - 120°F
Relative Humidity	: 93 ± 2% RH (non-condensing) at 32 ± 2° C/90 ± 3°F
Charging Voltage	: 28.2 V±0.5V
Charging current	: 0.5A (Max.)
Wiring	: Class B
Operating Nominal Voltage	: 24 VDC Nominal
Current for NACs	: 0.6Amp
End-of-Line Resistor	: 4K7, 1/4watt

PRODUCT DATA SHEET

ELECTRICAL SPECIFICATION

Normal Operating Voltage : 14-21 VDC
 Alarm Current : 15 - 30mA
 Short circuit current : 42mA Maximum
 Loop resistance : 50 Ω Maximum
 End-of-Line Resistor : 4.7K 1/4watt
 Standby current : 6.8mA
 (2.4mA for detectors)

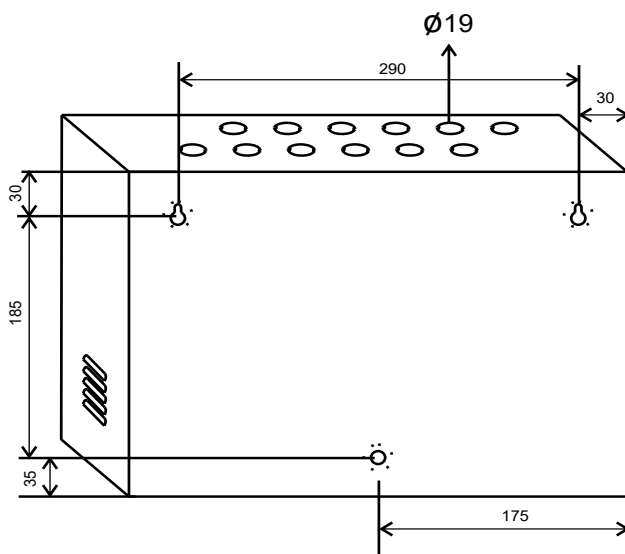
Type : Form C
 No of Relays : 3
 Relay contact rating : 2Amps @3DVDC
 : 0.5Amps @125DVAC

Power factor : 1

DIMENSION

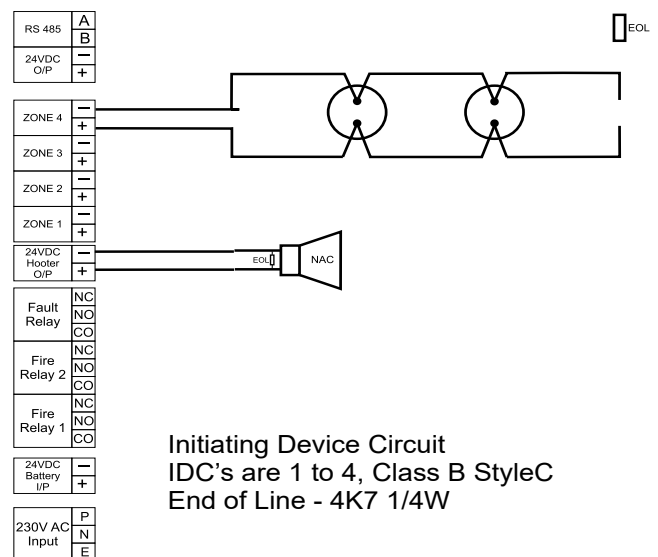
Dimension : 350W x 250H x 100D
 Color : Red / White
 Construction : 18 gauge (1.22mm)
 : CRCA sheet w/ powder coat
 IP rating : IP50
 Cable Entry : 11 x 19mm Knockout in top

Mounting Details



Note:- All Dimensions are in MM

Wiring Diagram



Initiating Device Circuit
 IDC's are 1 to 4, Class B StyleC
 End of Line - 4K7 1/4W