

PRODUCT DATA SHEET

RE-717 MR
Addressable Relay Module



OVERVIEW

RE - 717MR Relay Module facilitates third party devices to interface with Ravel make addressable panel. Relay Modules are the remote devices to activate potential free contacts. The RED blinking LED indicates normal operating condition and the steady state LED for activated conditions. DIP switches are provided for addressing of the module. The Monitor circuit is supervised for fully condition.



FEATURES

- ▶ Indian Manufacturer - Indian Standard
- ▶ UL Listed (9th Edition)
- ▶ Modular Construction
- ▶ Module Status by RED LED
- ▶ Analogue Communication with the panel
- ▶ Module Addressing by 8 way DIP switches
- ▶ Low Standby Current
- ▶ Available with suitable back boxes

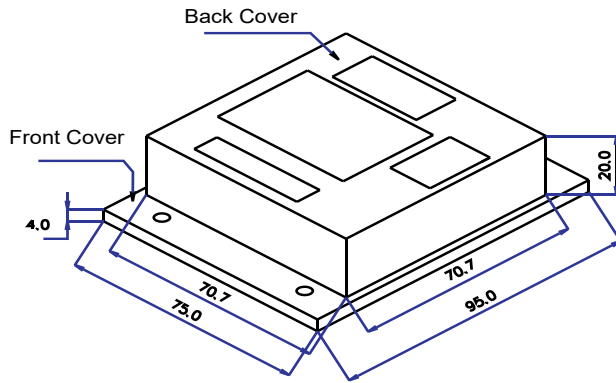
ELECTRICAL / MECHANICAL SPECIFICATION

Operating Voltage	: 24VDC Nominal
Current Draw	: 2mA Max (Latched)
Standby current	: 0.5 mA
Contact Rating	: 2A @ 30VDC (Resistive)
Temperature Range	: 0°C to 49°C / 32° - 120°F
Humidity	: 93 ± 2% RH (non condensing)
Dimension	: (95W x 75H x 24D)mm
Color	: Black
Weight	: 0.35 Kg

PRODUCT DATA SHEET

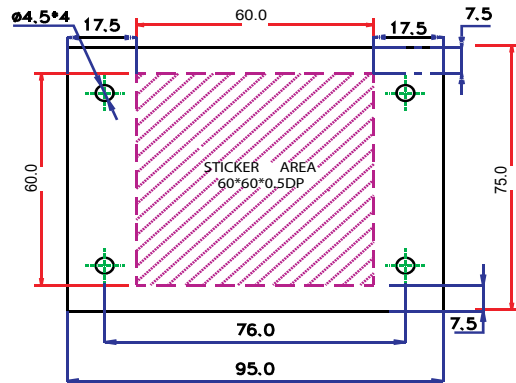
DIAGRAM

G.A.Diagram:

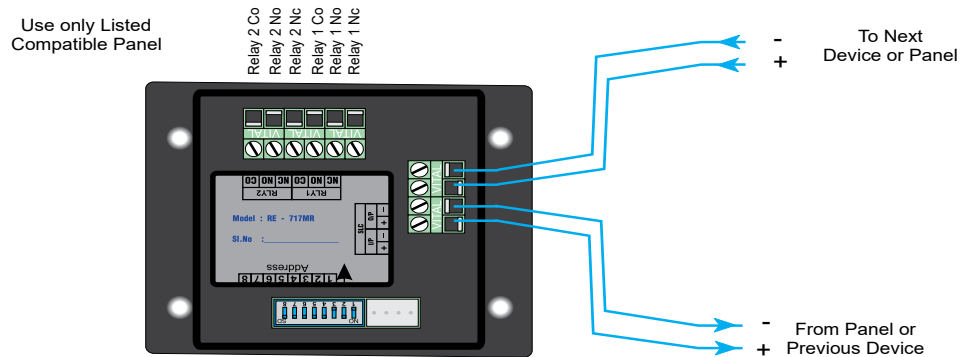


ALL DIMENSIONS ARE IN MM

Mounting Detail:



WIRING



NOTE:

ALL WIRING SHOWN IS SUPERVISED AND POWER LIMITED
* RELAY OUTPUT ARE NOT SUPERVISED