



Hydrant

FT16-117T-00 DRY TYPE PILLAR HYDRANT



BS EN 14384
Cert/LPCB ref.1280a

Dry barrel design eliminates damage to the hydrant caused by freezing or corrosion of the upper part.

* Break away design to prevent accidents to the hydrants where only the upper part of the flange would be broken upon impact. When broken, it is still able to maintain seal and does not leak.

* Simple rugged construction and easy to maintain.

* Automatic drain system drains the water in the upper part when the main valve is closed thus avoiding damage caused by freezing.

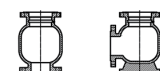
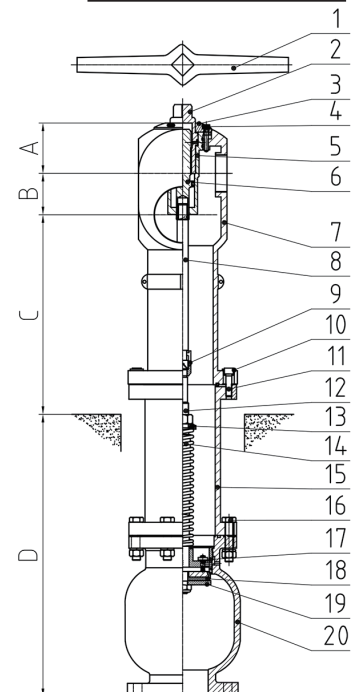
* Extremely sand blasted for smooth finish, painted red with electrostatic powder coating on the section above the ground and double coating of black bituminous paint on the section below the ground, all paint thickness $\geq 300\mu\text{m}$.

* Hydrants for non potable water systems.

NO.	ITEM
1	OPERATING HANDLE
2	OPERATING NUT
3	COVER
4	COVER BOLT
5	BUSHING
6	CONNECTING STEM
7	UPPER BARREL
8	UPPER STEM
9	STEM COUPLING
10	PEDESTAL
11	BOLTS
12	LOWER STEM
13	SPRING SEAT
14	SPRING
15	LOWER BARREL
16	BOTTOM BOLT GASKET & NUT
17	AUTOMATIC DRAIN ASSEMBLY
18	SEAL
19	SEAL SEAT
20	BAND (90° or 180° type)

Technical Specification:

Model	FT16-117S-00	FT16-117T-00	
Standard	BS EN 14384		
Working pressure	16 bar		
Inlet	DN100 with flange (4")	DN150 with flange(6")	
Outlet	Two 2.5" BSP and one 4" BSP add coupling or valves		
Dimensions(mm)	A	100	
	B	70	
	C	415	
	D	565	720
Shell material	Ductile Iron		
MOT	$\leq 125\text{NM}$	$\leq 125\text{NM}$	
MST	$\geq 250\text{NM}$	$\geq 250\text{NM}$	
Kv Value	112.72(2.5" outlet)	223.47(4" outlet)	
Closing direction	Clockwise	Clockwise	
Opening turns	11	11	
Time for draining	$\leq 10\text{min}$	$\leq 10\text{min}$	
Retained water	$\leq 150\text{ml}$	$\leq 150\text{ml}$	



FIRE PROTECTION HYDRANT